

Standard Trucks



▼ CARGO VAN

Weight Capacity: up to 2,500 lbs.
Door Opening (W x H): 48" x 46"
Inside Dimensions (L x W x H): 50" x 48" x 46"



▼ 14' CUBE VAN

Weight Capacity: up to 5,000 lbs.
Door Opening (W x H): 85" x 75"
Inside Dimensions (L x W x H): 168" x 87" x 77"



▼ 24' STRAIGHT TRUCK

Weight Capacity: up to 15,000 lbs.
Door Opening (W x H): 87" x 88"
Inside Dimensions (L x W x H): 288" x 91" x 89"



▼ 48' DRY VAN (SWING DOOR)

Weight Capacity: up to 42,000 lbs.
Door Opening (W x H): 102" x 110"
Inside Dimensions (L x W x H): 47'-6 1/4" x 102" x 110"



▼ 53' DRY VAN (SWING DOOR)

Weight Capacity: up to 45,000 lbs.
Door Opening (W x H): 102" x 110"
Inside Dimensions (L x W x H): 52'-6 1/4" x 102" x 110"

Flatbed Trailer

48' & 53' Flatbed



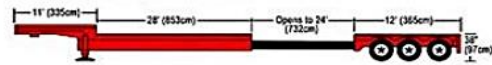
Expandable Flatbed 48' & 53'



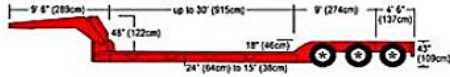
53' Drop Deck with Sliding Rear Axle



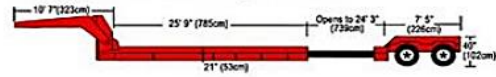
Expandable Drop Deck 3 Axle



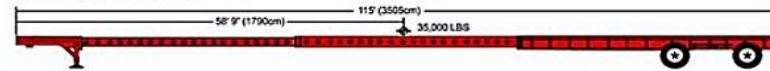
Double Drop Lowboy RGN 2 or 3 Axle



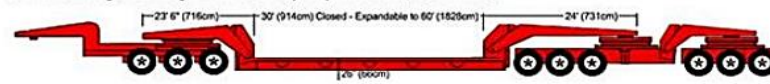
RGN Expandable Double Drop Deck 2 Axle



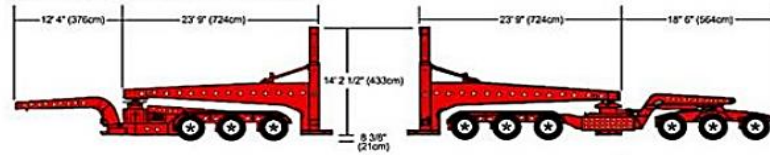
115' Expandable Flatbed



6 & 9 Axle High Tonnage Double Drop Expandable (Floor Deck)



6 & 9 Axle Schnable with Steerable Dolly



10 & 13 Axle High Tonnage Double Drop Expandable (Floor Deck)



10 Axle High Tonnage RGN Double Drop Expandable



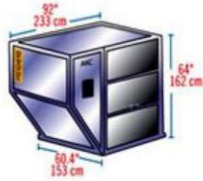
Expandable Blade Trailer



Airfreight Containers

LD-1

IATA ULD Code: AKC Contoured Container
 Also known as: AVC, AVD, AVK, AVJ
 Forkable: AVY
 Classification: LD-1
 Rate Class: Type 8
 Suitable for: B747, B767, B777, MD-11
 Internal volume: 4.8 cu. m (169.5 cu. ft)
 Maximum gross weight: 1588 kg (3501 lb)



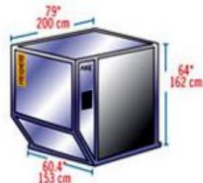
LD-2

IATA ULD Code: DPE Contoured Container
 Also known as: APA, DPA
 Forkable: DPN
 Classification: LD-2
 Rate Class: Type 8D
 Suitable for: B767
 Internal volume: 3.4 cu.m (120 cu. ft)
 Maximum gross weight: 1225 kg (2700 lb)



LD-3

IATA ULD Code: AKE Contoured Container
 Also known as: AKE, AVA, AVB, AVC, AVK, AVL, DVE, DVP, XKS, XKG
 Forkable: AXN, AVN, DKN, DVN, XKN
 Classification: LD-3
 Rate Class: Type 8
 Suitable for: A300, A310, A330, A340, B747, B767, B777, DC-10, MD-11, L1011
 Internal volume: 4.3 cu. m (152 cu. ft)
 Maximum gross weight: 1588 kg (3500 lb)



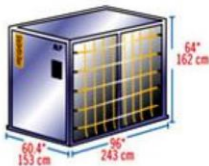
Insulated LD-3

IATA ULD Code: RKN
 Classification: LD-3
 Rate Class: Type 8
 Suitable for: A300, A310, A330, A340, B747, B767, B777, DC-10, MD11, L1011
 Internal volume: 3.0 cu.m (109 cu. ft)
 Maximum gross weight: 1588 kg (3500 lb)
 Temperature Control Range: -20C to +20C



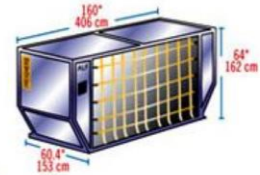
LD-4

IATA ULD Code: ALP Rectangular Container
 Also known as: ALD, AWD, AWZ, DLP
 Forkable: ALB, ALC, AWB, AWC
 Classification: LD-4
 Rate Class: Type 8
 Suitable for: B767, B777
 Internal volume: 5.7cu. m (201 cu. ft)
 Maximum gross weight: 2449 kg (5399 lb)



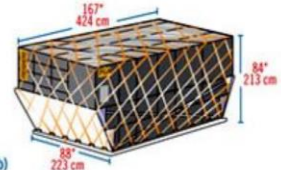
LD-6

IATA ULD Code: ALF Contoured Container
 Also known as: AWD, AWF
 Forkable: AWC
 Classification: LD-6
 Rate Class: Type 6W
 Suitable for: A300, A310, A330, A340, B747, B777, DC-10, MD-11, L1011
 Internal volume: 8.9 cu. m (314 cu. ft)
 Maximum gross weight: 3175 kg (7000 lb)



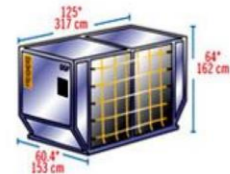
LD-7

IATA ULD Code: XAW PIP Pallet with fixed angle wings and net
 Classification: LD-7
 Rate Class: Type 5
 Suitable for: Wide body: All aircraft
 Maximum volume with overhang: 14.0 cu. m (494 cu. ft)
 Maximum gross weight: 5000 kg (11023 lb)



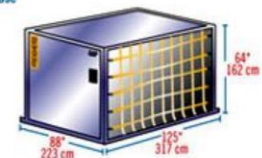
LD-8

IATA ULD Code: DQF
 Also known as: ALE, ALN, DLE, DLF, DQP, MQP
 Classification: LD-8
 Rate Class: Type 6A
 Suitable for: B767
 Internal volume: 6.85 cu. m (242 cu. ft)
 Maximum gross weight: 2450 kg (5401 lb)



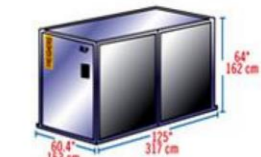
LD-9

IATA ULD Code: AAP Enclosed Pallet on PIP base
 Also known as: AA2, XAG, XAV
 Classification: LD-9
 Rate Class: Type 5
 Suitable for: A300, A310, A330, A340, B747, B767, DC-10, MD-11, L1011
 Internal volume: 9.1 cu. m (321 cu. ft)
 Maximum gross weight: 4624 kg (10194 lb) lower deck
 6000 kg (13227 lb) main deck



LD-11

IATA ULD Code: ALP Rectangular Container
 Also known as: ALD, AWZ, AWB, AWD, AWZ, DLP, DWB, MWB
 Refrigerated version: RWB, RWD, RWZ
 Classification: LD-11
 Rate Class: Type 6
 Suitable for: A300, A310, A330, A340, B747, B777, DC-10, MD-11, L1011
 Internal volume: 7.2 cu. m (253 cu. ft)
 Maximum gross weight: 3176 kg (7002 lb)



A-2

IATA ULD Code: DAA
 Classification: A-2
 Suitable for: B747, B747F, DC8, DC10, A300/F
 Internal volume: 12.6 cu. m (444 cu. ft)
 Maximum gross weight: 6033 kg (13300 lb)



Ocean Freight Containers

DRY CARGO CONTAINERS



● DIMENSIONS

Type	Container Weight			Interior Measurement			Door Open		
	Gross (kg)	Tare (kg)	Net (kg)	Length (m)	Width (m)	Height (m)	Capacity (m ³)	Width (m)	Height (m)
20 ft	24,000	2,370	21,630	5.898	2.352	2.394	33.20	2.343	2.260
40 ft	30,480	4,000	26,480	12.031	2.352	2.394	67.74	2.343	2.260

● CHARACTERISTICS

Manufactured from either Aluminum or steel, they are suitable for most types of cargo / general cargo. Aluminum containers have a slightly larger payload than steel, and steel containers have a slightly larger internal cube.

REFRIGERATED CONTAINERS



● DIMENSIONS

Type	Container Weight			Interior Measurement			Door Open		
	Gross (kg)	Tare (kg)	Net (kg)	Length (m)	Width (m)	Height (m)	Capacity (m ³)	Width (m)	Height (m)
20 ft	24,000	3,050	20,950	5.449	2.290	2.244	26.70	2.276	2.261
40 ft	30,480	4,520	25,960	11.690	2.250	2.247	57.10	2.280	2.205

● CHARACTERISTICS

Recommended for delicate cargo. Bottom-air delivery system ensures refrigerated cargo reaches its destination in optimum condition.

OPEN TOP CONTAINERS



● DIMENSIONS

Type	Container Weight			Interior Measurement			Door Open		
	Gross (kg)	Tare (kg)	Net (kg)	Length (m)	Width (m)	Height (m)	Capacity (m ³)	Width (m)	Height (m)
20 ft	24,000	2,580	21,420	5.629	2.212	2.311	32.00	2.330	2.263
40 ft	30,480	4,290	26,190	11.763	2.212	2.311	65.40	2.330	2.263

● CHARACTERISTICS

Allowing cargo to be loaded from the top, open top containers are particularly suitable for bulky cargo such as machinery. They are fitted with a PVC tarpaulin cover and attachable bows with cable sealing devices. The container doors can be removed to make the stuffing of cargo more convenient. Manufactured from steel.

FLAT RACK CONTAINERS



● DIMENSIONS

Type	Container Weight			Interior Measurement			Capacity
	Gross (kg)	Tare (kg)	Net (kg)	Length (m)	Width (m)	Height (m)	(m ³)
20 ft	30,480	2,900	27,580	5.624	2.236	2.234	27.90
40 ft	34,000	5,870	28,130	11.786	2.236	1.968	51.90

● CHARACTERISTICS

Flatracks are especially suited to heavy loads or cargo that needs loading from the top or sides, such as pipes and machinery. There are collapsible and non-collapsible containers with or without walls. Manufactured from steel.

GARMENT CONTAINERS



● DIMENSIONS

Type	Container Weight			Interior Measurement			Door Open		
	Gross (kg)	Tare (kg)	Net (kg)	Length (m)	Width (m)	Height (m)	Capacity (m ³)	Width (m)	Height (m)
20 ft	24,000	2,240	21,760	5.898	2.352	2.394	33.20	2.343	2.260
40 ft	30,480	3,885	26,595	12.031	2.352	2.394	67.74	2.343	2.260

● CHARACTERISTICS

Use for all kinds of garment. The containers are specially designed for garment product and related industry. There are some options of using a string or bar system or a combination of both. The containers allow increased flexibility, greater load internal capacity and savings on transportation and handling cost.

HIGH CUBE CONTAINERS



● DIMENSIONS

Type	Container Weight			Interior Measurement			Door Open		
	Gross (kg)	Tare (kg)	Net (kg)	Length (m)	Width (m)	Height (m)	Capacity (m ³)	Width (m)	Height (m)
40 ft	30,480	3,980	26,500	12.031	2.352	2.698	76.30	2.340	2.585
45 ft	30,480	4,800	25,680	13.544	2.352	2.696	86.00	2.340	2.585

● CHARACTERISTICS

With high cube containers, you gain an extra foot in height compared with general-purpose containers. Ideal for light, voluminous cargo or bulky cargo. These extra volume containers come in steel and aluminum.